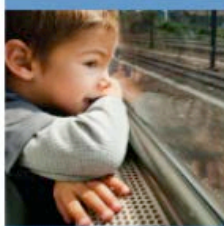
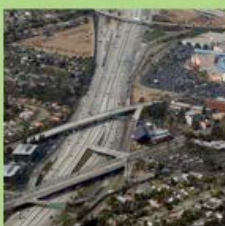
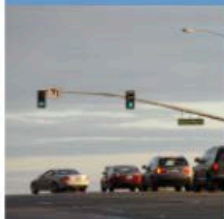
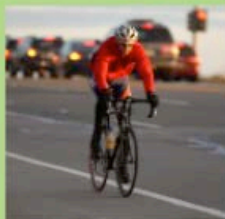




# Draft 2014 Long-Range Transportation Plan

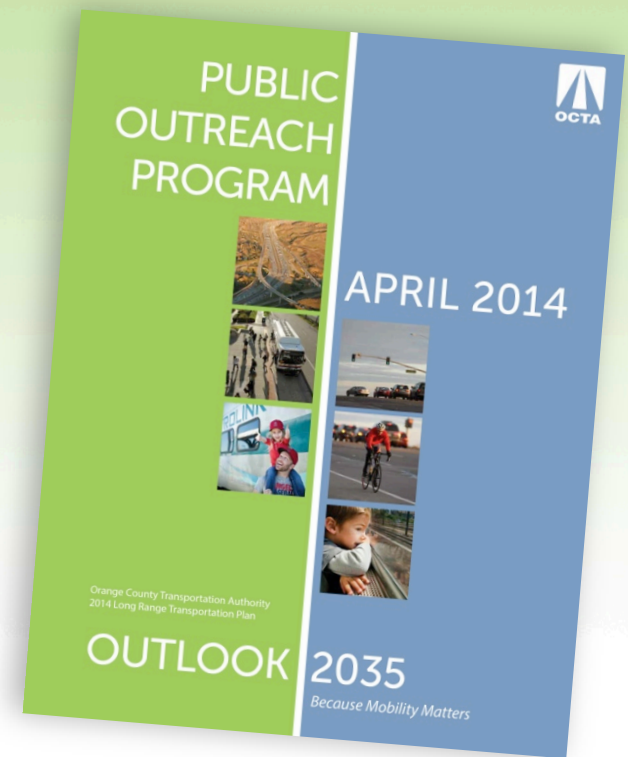
## OUTLOOK 2035

Because Mobility Matters



# 2014 LRTP

- Transportation vision document
- Updated every four years
- Input for the RTP
- Must consider:
  - Stakeholder input
  - Socioeconomic forecasts
  - Revenue forecasts
  - Current commitments
  - State and federal mandates
  - Regional coordination
  - Technology developments



LRTP – Long-Range Transportation Plan  
RTP – Regional Transportation Plan

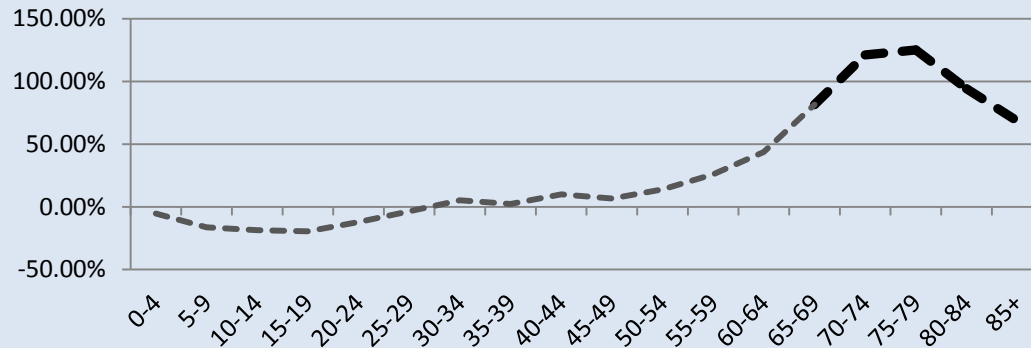
# 2035 Scenarios

- **Baseline**
  - Existing transportation system
  - Fully funded Federal Transportation Improvement Plan projects
- **Preferred**
  - Baseline projects
  - M2
  - Financially constrained discretionary projects
- **Conceptual**
  - Baseline and preferred projects
  - Financially unconstrained projects
    - Benefit the goals and objectives
    - Require additional revenues and/or study



# Projections through 2035

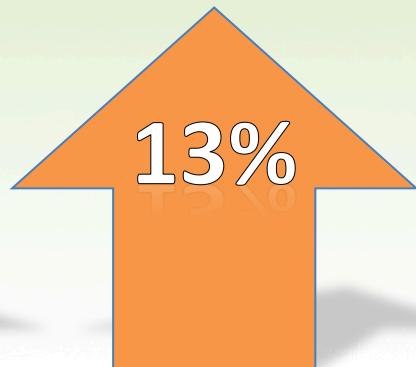
**% Change in Orange County Population by Age, 2010-2035**



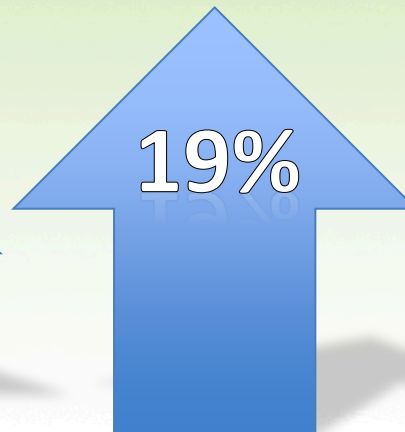
Source: OCP 2010 Modified



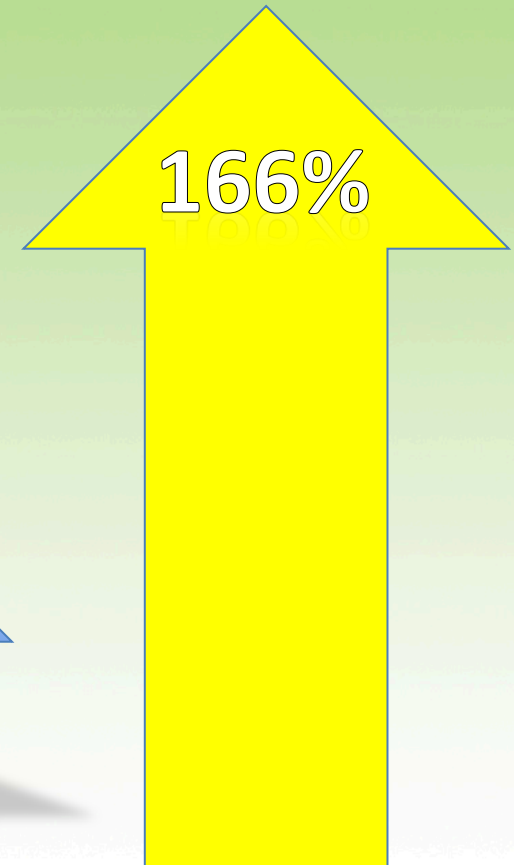
Housing



Population



Employment



Total delay due to congestion

# Overall Stakeholder Themes

1. **Optimize** transportation systems (signal synchronization, rapid bus, and managed lanes)
2. **Maintain** streets and highways
3. **Educate** the public about transportation alternatives, bicycle safety, and managed lane strategies
4. **Innovate** new transit strategies, especially rail, and provide real-time information
5. **Collaborate** on regional solutions, and work with local jurisdictions to link land use and transportation plans
6. **Explore** incentives for carpools on toll roads, expansion of bus service and the vanpool program, dedicated lanes for transit on streets and freeways, and potential for managed lanes

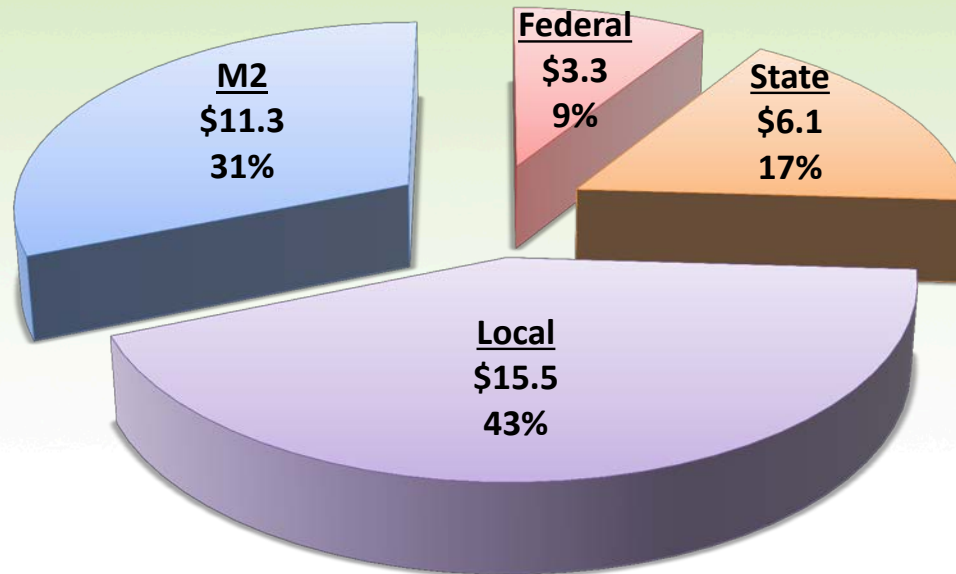
# Preferred Scenario

## Project Selection Factors

- Stakeholder Input
- Goals and Objectives
- Project Readiness
- Revenue Forecast

### Draft 2014 LRTP – Fiscal Year 2015-35 Revenue Forecast (Billions)

Total Revenues = \$36.1 Billion

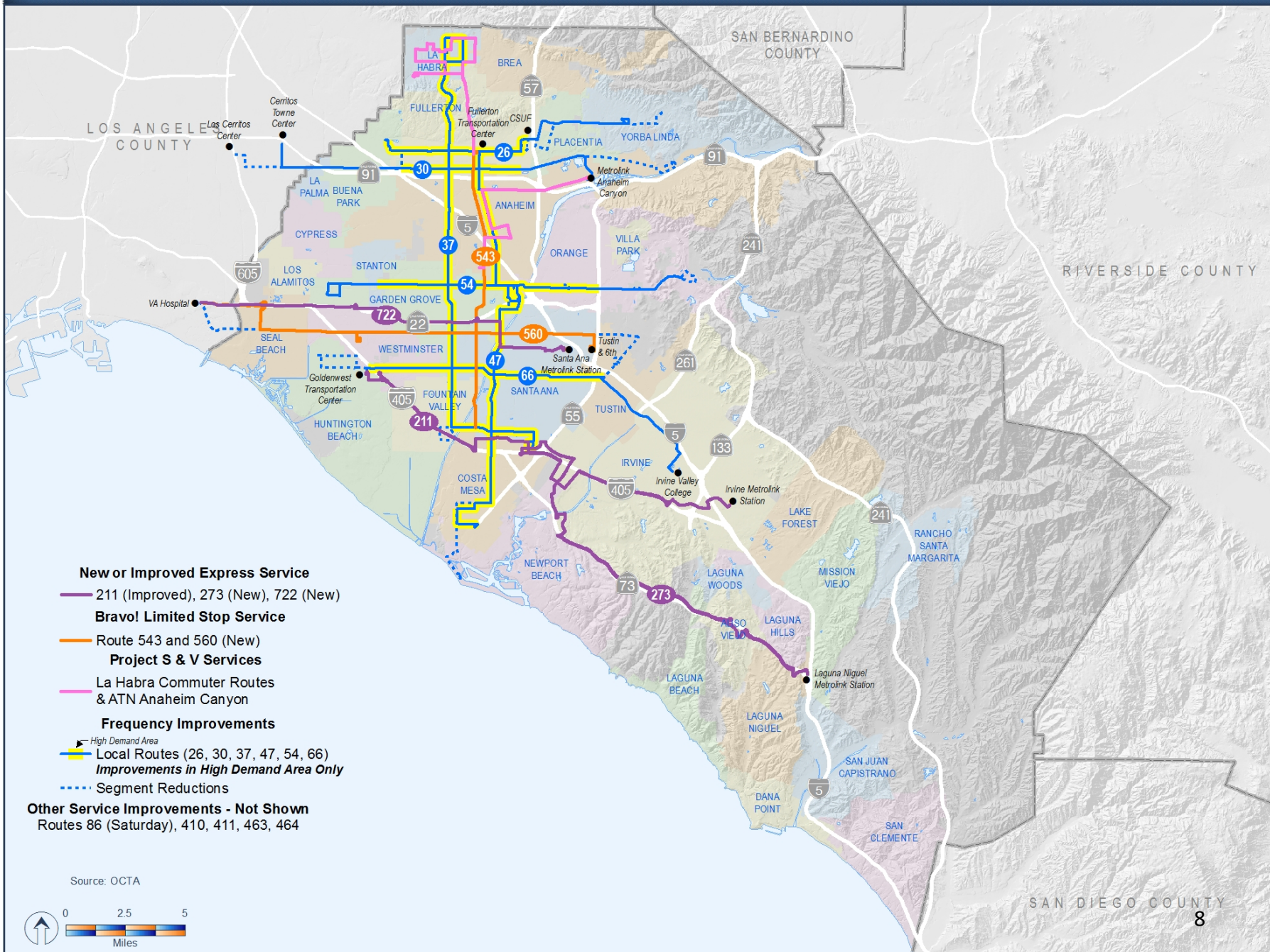


# Draft Preferred Scenario

- Proposed additions over 2010 Base Year:
  - New bus and streetcar service on high-demand corridors
  - Enhanced bus routes to maintain on-time performance
  - 20 new weekday Metrolink trains
  - 650 miles of bikeways
  - 820 lane miles on the Master Plan of Arterial Highways
  - 206 freeway/carpool lane miles
  - 236 tollway lane miles
  - 450 vanpools and station vans



# 2035 Bus Service Improvements



**New or Improved Express Service**

— 211 (Improved), 273 (New), 722 (New)

**Bravo! Limited Stop Service**

— Route 543 and 560 (New)

**Project S & V Services**

— La Habra Commuter Routes  
& ATN Anaheim Canyon

**Frequency Improvements**

— High Demand Area  
— Local Routes (26, 30, 37, 47, 54, 66)  
— Improvements in High Demand Area Only

--- Segment Reductions

**Other Service Improvements - Not Shown**

Routes 86 (Saturday), 410, 411, 463, 464

Source: OCTA

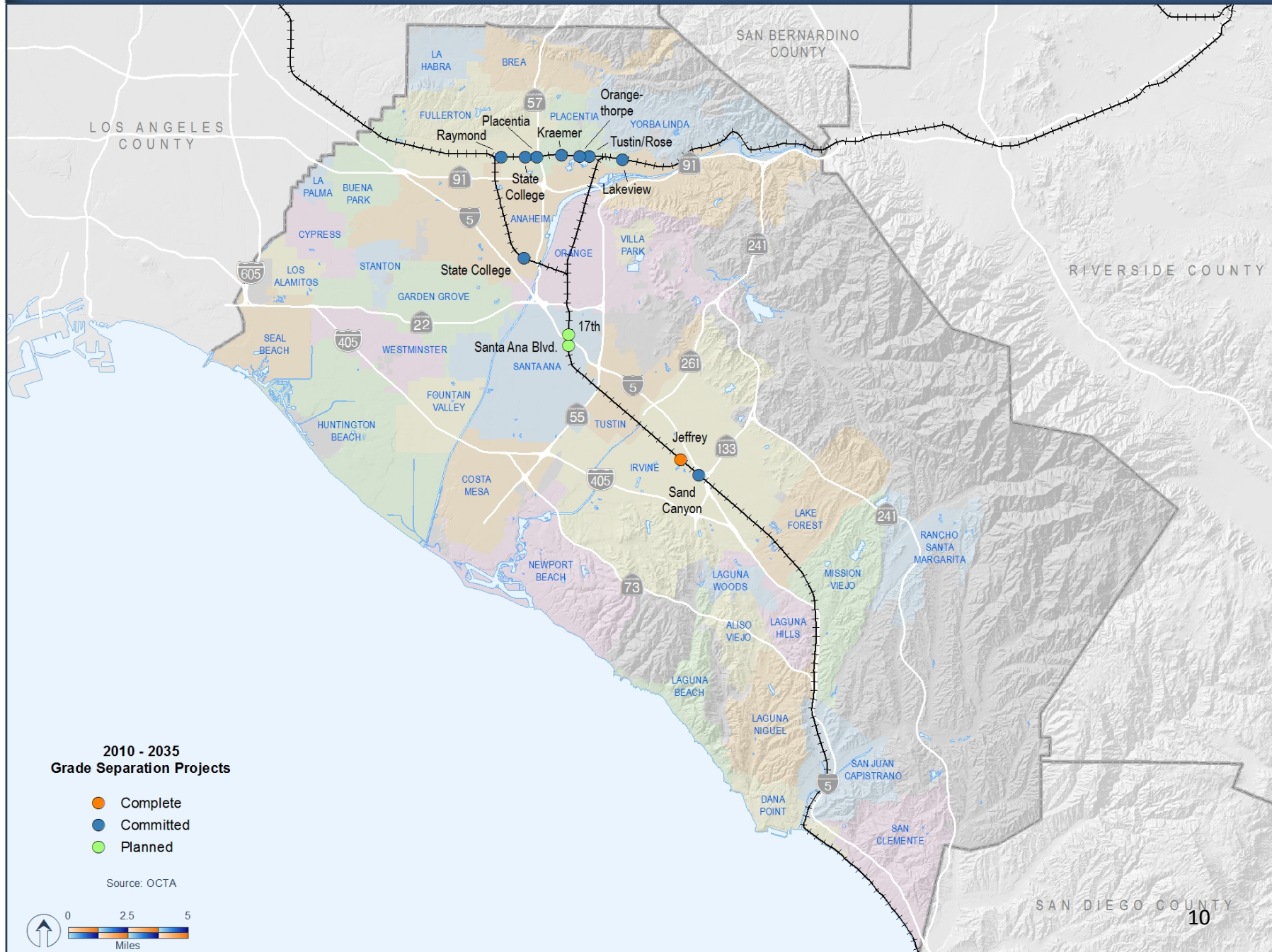




# 2035 Metrolink Service Expansion and Fixed Guideways



# 2010 - 2035 Grade Separation Projects



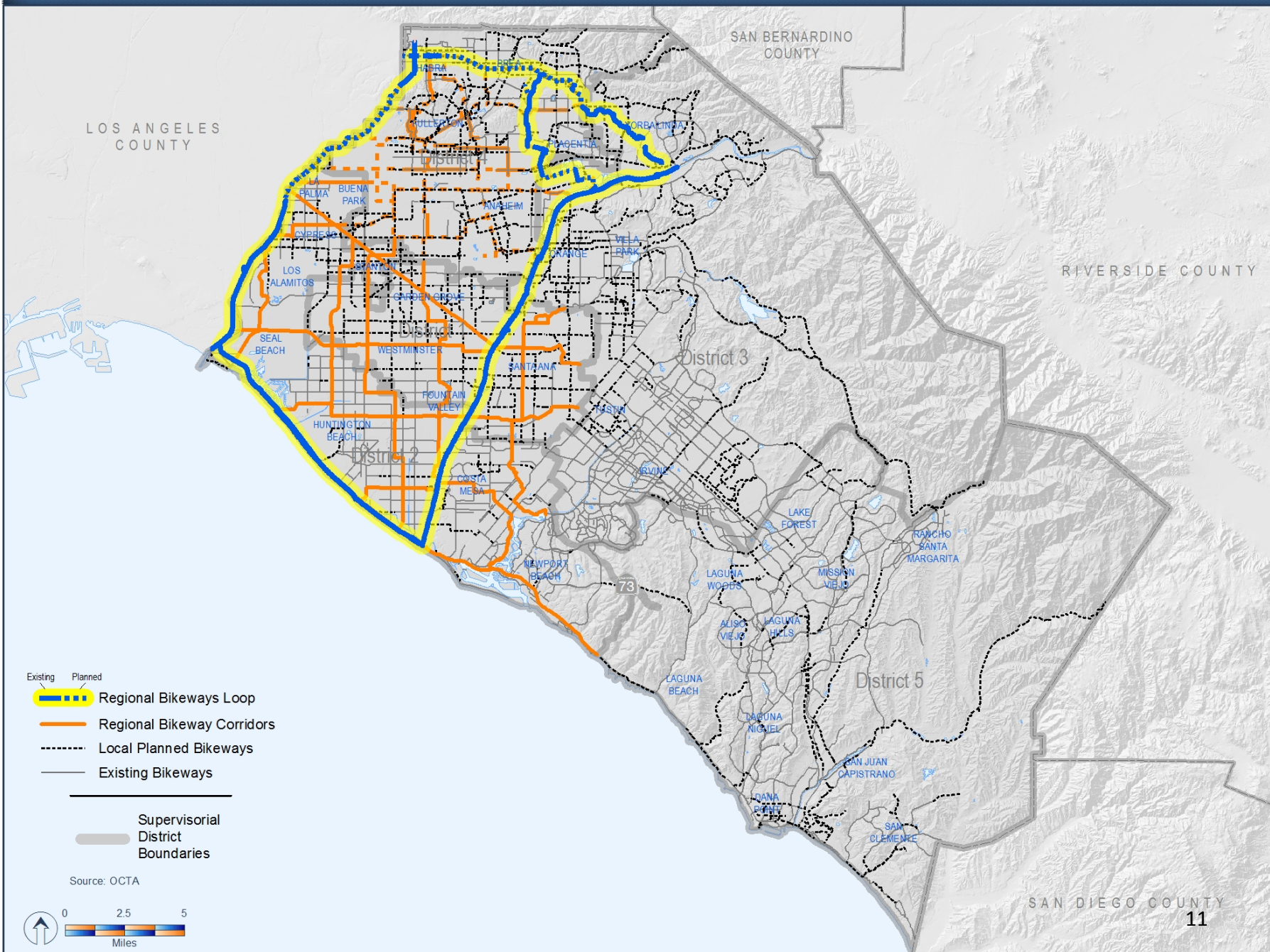
## 2010 - 2035 Grade Separation Projects

- Complete
- Committed
- Planned

Source: OCTA

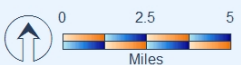


# 2035 Planned Regional Bikeways Corridors

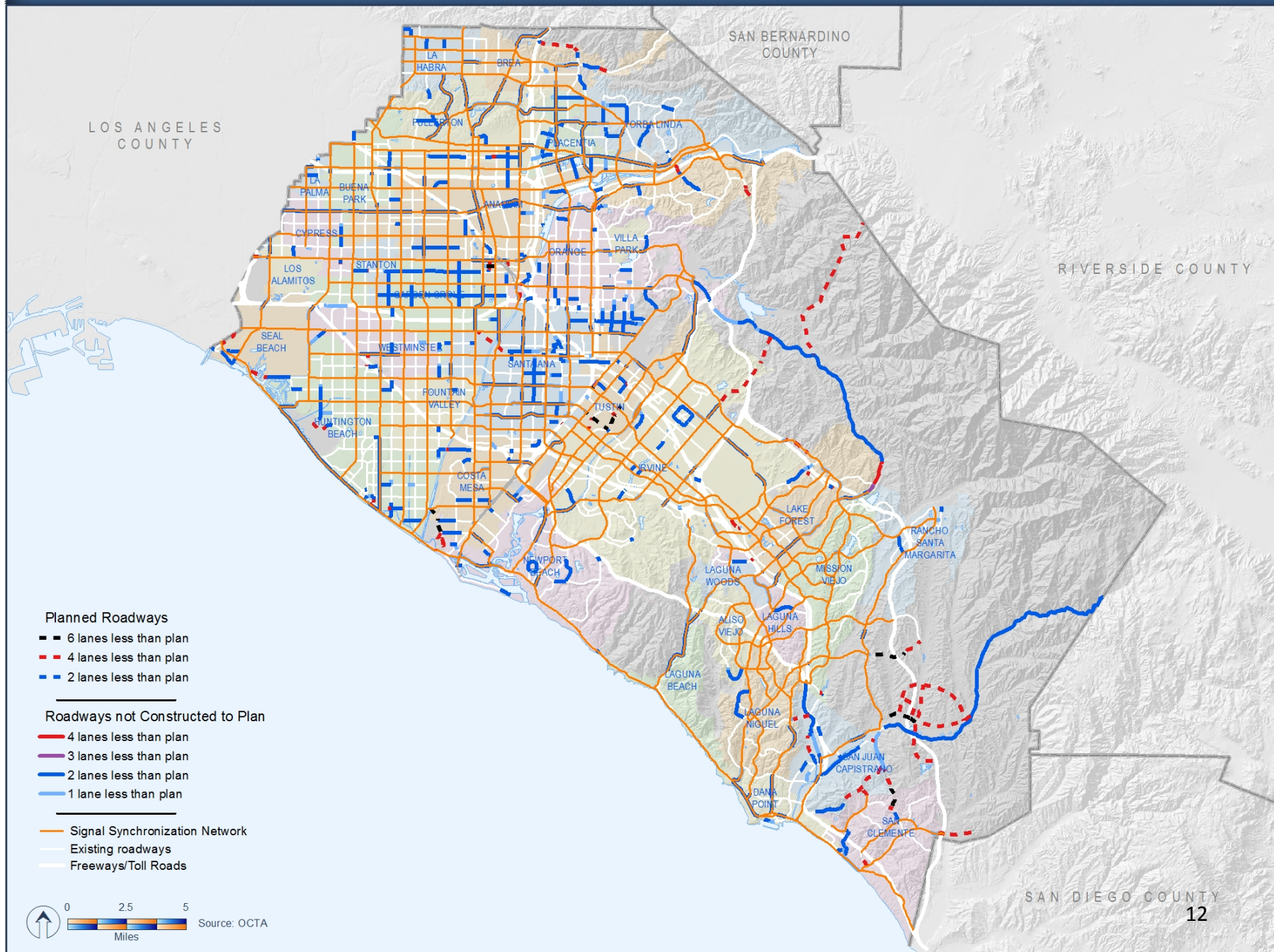


- Existing    Planned
- Regional Bikeways Loop
  - Regional Bikeway Corridors
  - Local Planned Bikeways
  - Existing Bikeways
  - Supervisorial District Boundaries

Source: OCTA



# Future Roadway Projects by 2035



# 2035 Preferred Scenario Freeway, HOV, and Tollway Lane Addition Areas



### Lane Addition Areas

- General Purpose
- HOV
- TCA
- San Diego County Freeway Improvement Project
- New Facility
- Existing HOV Facilities
- No Planned Lane Additions
- Interchange Improvements

Source: OCTA



SCAG – Southern California Association of Governments  
 I-405 – Interstate 405  
 HOV – High-occupancy vehicle  
 TCA – Transportation Corridor Agency  
 HOT – High-occupancy toll

8 General Purpose Lanes + 2 HOV Lanes

8 General Purpose Lanes + 4 HOT Lanes by 2050

# Systems Integration

- Efficiencies can be gained through integrated transportation systems
  - Shared infrastructure
  - Connectivity between modes
  - Access to key destinations
  - Improved travel times



# Draft Preferred Scenario

## Draft 2035 Preferred Scenario - Initial Model Results

|                                 | 2010<br>Base Year | 2035 Baseline | Draft 2035<br>Preferred | Percent Change from<br>2035 Baseline |   |
|---------------------------------|-------------------|---------------|-------------------------|--------------------------------------|---|
| Daily Transit Trips             | 133,469           | 165,219       | 189,426                 | 14.7% Increase                       | ● |
| Total Vehicle Hours of Delay    | 274,646           | 729,432       | 506,142                 | 30.6% Decrease                       | ● |
| Daily Vehicle Miles Traveled    | 63,404,082        | 81,112,113    | 81,750,024              | 0.8% Increase                        | ● |
| Average Speed – Freeway GP Peak | 40.4              | 34.5          | 39.0                    | 13.2% Increase                       | ● |
| Average Speed – HOV Peak        | 48.4              | 57.4          | 59.5                    | 3.6% Increase                        | ● |
| Average Speed – Arterial Peak   | 30.3              | 22.7          | 27.2                    | 20.0% Increase                       | ● |

GP – general purpose lanes

Note: HOV modeled with three-plus occupancy requirement in 2035.

Source: Orange County Transportation Analysis Model 3.4.1

- = desirable outcome
- = needs improvement
- = unacceptable outcome

# Beyond the Preferred Scenario

- Projects requiring additional funding and/or study:
  - Connect the planned Santa Ana/Garden Grove and Anaheim fixed guideway services
  - Eight new Bravo bus routes in high-demand areas
  - 36 new weekday Metrolink trains
  - Six LOSSAN grade separations
  - Operational freeway/carpool improvements
- 2016 RTP/SCS regional strategies
- Four-Year Action Plan





# 2014 LRTP Four-Year Action Plan

- Collaborate on inter-county connectivity
  - LOSSAN/Green Line connection
  - Gold Line Eastern Extension – Phase 2
  - I-405 Corridor Master Plan
  - San Diego's Interstate 5 HOT Lane Project
  - 91 Express Lanes extension into Riverside County
- Study intra-county opportunities
  - Regional active transportation planning
  - Guideway projects expansion
  - Sustainable transportation strategies
  - Coordinate with Caltrans, Toll Roads (TCAs), and local jurisdictions
  - Enhance transportation outreach and education
  - Active transportation safety
  - Transit use and trip planning
- Monitor emerging issues
  - State/federal funding opportunities
  - 2016 RTP/SCS
  - Technology advancements
    - Autonomous vehicles
    - Alternative fuels
    - Smart phone applications

# Next Steps

- Release draft for 45-day public review
- Open House on May 7, 2014
- Final LRTP in September 2014
- Submit to SCAG by November 2014